

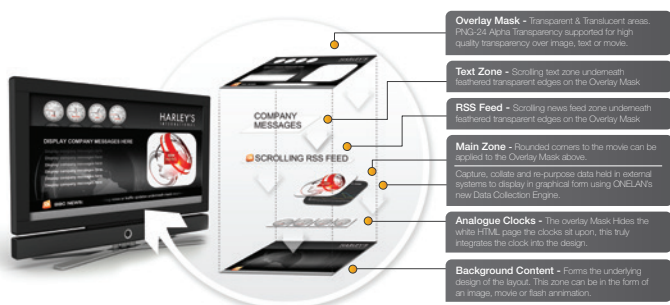
CMS Virtual Appliance

A sophisticated planning, design, distribution and management appliance for multichannel digital signage networks.

Design your content

- ◆ Multiple screen formats
- ◆ Unlimited number of screen layout zones in any position, layer and time
- ◆ Multimedia content support including all main video standards, Adobe® Flash® and HTML5
- ◆ Variable transparency for content and layout zones
- ◆ Independent background audio capability
- ◆ Drag and drop screen layout and playlist design

Example screen layout design - zones can be any position and layer



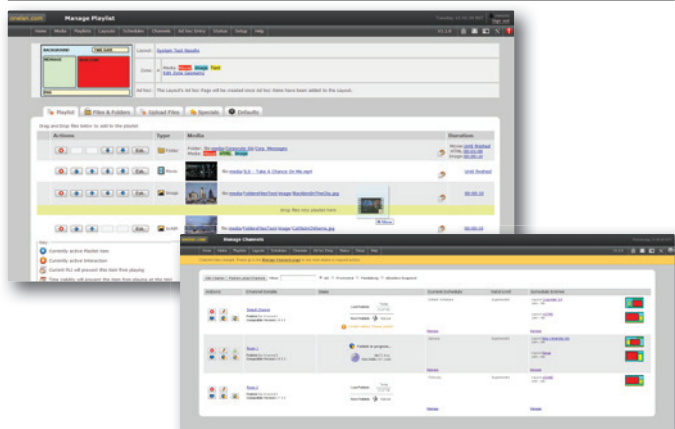
Multi-media content support



Automate your playlists

- ◆ Flexible scheduling
- ◆ Folder play for sub playlists of content
- ◆ Conditional playback based on player tagging (PLI)
- ◆ Content triggering (advance to/rendezvous)

Manage playlists and channels



Distribute your content

- ◆ 50 content channels
- ◆ Simultaneous publishing
- ◆ 500 simultaneous subscribers
- ◆ Automatic publishing
- ◆ Inbuilt traffic shaper
- ◆ Near real-time messaging for Ad Hoc content
- ◆ Requires separate player for live preview



Web User Interface

- ◆ Multilingual (14 languages)
- ◆ Content design and approval workflow
- ◆ Simple to use for non-technical end users
- ◆ Powerful features for expert users
- ◆ Unlimited users (5 concurrent)
- ◆ User rights management

Key Features

- ◆ Flexible content design
- ◆ Scalable content distribution
- ◆ Secure and enterprise ready
- ◆ Linux-based network appliance
- ◆ Inbuilt firewall
- ◆ LDAP support

To find out more about CMS Virtual Appliance, please contact us on:
+44 (0) 1491 411 400
or sales@onelan.com



The CMS Virtual Appliance simplifies complicated tasks and allows users to produce almost any content experience for their audiences.

Easy access to external live content sources

- ◆ Newsfeed and content apps support
- ◆ Support for IPTV streaming
- ◆ Cross domain support for dynamic Adobe Flash and HTML5 content
- ◆ Web page cropping and zoom facility
- ◆ Live video / TV management capability
- ◆ Collection and intelligent display of data from external data sources

Content interaction

- ◆ Touch pass through to Adobe Flash or HTML content
- ◆ Playlist control by touch event
- ◆ XML API for integration with external systems
- ◆ GPIO for bi-directional control
- ◆ Optional infra red remote control devices

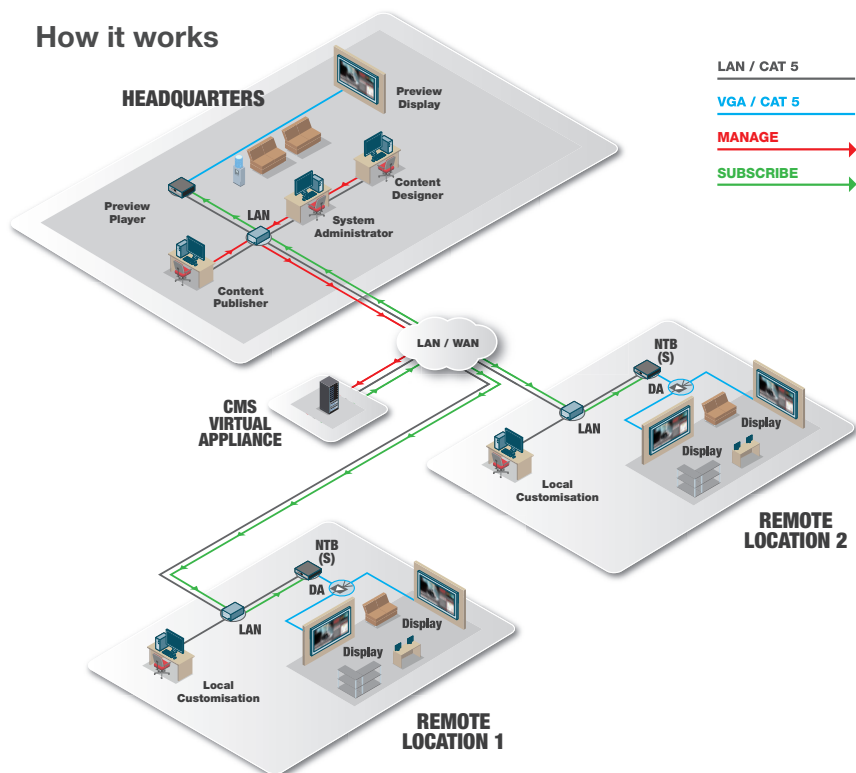
Ad hoc local content management

- ◆ Design simplified and branded ad hoc user interfaces
- ◆ Instant messaging to a single player or group of players
- ◆ Local uploading of media for automatic playback according to pre-defined rules
- ◆ Updating of dynamic tables
- ◆ Local/remote content activation
- ◆ Per channel override from centre

Themed Ad Hoc Page



How it works



Virtual Appliance Configuration

- ◆ 8 CPU cores
- ◆ 16GB RAM
- ◆ Thinly provisioned 500GB disc storage
- ◆ 1Gb Ethernet adaptor
- ◆ x86-64 bit capable host
- ◆ VMware vSphere 5.0 and above

CMS Virtual Appliance

CMS Virtual Appliance	CMS-VM-1500	1 Organisation and 1500 Players
CMS Virtual Appliance	CMS-VM-1000	1 Organisation and 1000 Players
CMS Virtual Appliance	CMS-VM-500	1 Organisation and 500 Players
CMS Virtual Appliance	CMS-VM-100	1 Organisation and 100 Players
CMS Virtual Maintenance	CMS-VM-MNT	Annual CMS Virtual Software Updates & Maintenance Support after year 1



Andersen House, Newtown Road, Henley-on-Thames, RG9 1HG, UK
 T: +44 (0)1491 411 400 F +44 (0)1491 579 254 E: sales@onelan.com