

ELPRO LARGE ELECTROL

Motorized projection screen for wall or ceiling installations

DA-LITE
A brand of **legrand**



Product specifications:

- Electrically operated projection screen 230 volt (50Hz) with a usage of no more than 0.69 Ampere (158.7 Watt).
- The motor is mounted on the left side and can be reached through a service hatch in the steel casing.
- The motor is mounted inside the roller, 65 cm long, 4 wire, 12 rotations per minute, maintenance free, integrated brake and thermal overload cut-out.
- The end positions are pre-set.
- The 4 wire connection is integrated into the end cap and can be connected to the electric installation with the connector and standard cable.
- Suitable for wall and ceiling mounting with the supplied flexible mounting brackets which can be positioned 100cm from either endcap.
- The steel square casing (23,9x27,6cm) is galvanised on the inside and on the outside powder coated with a matte structure coating (RAL 9010).
- The round slat bar closes off the bottom of the casing.
- The screen fabrics are flame retardant and seamless.
- The projection fabrics have a 5 cm. border all around or have no borders.
- The projection fabrics have a black backing. Standard 3 position wall switch is supplied.
- The projection screen is tested and monitored by the TÜV/GS programme (EN 60335-1: 2002+A1+A11+A12+A2+A13, EN6035-2-97:2006, DIN 19045-5/01.84 and ZEK 01.2-08/12.08) and CE marked and satisfies the strictest quality and safety requirements.

Options:

- Without borders

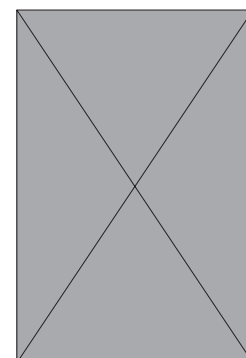


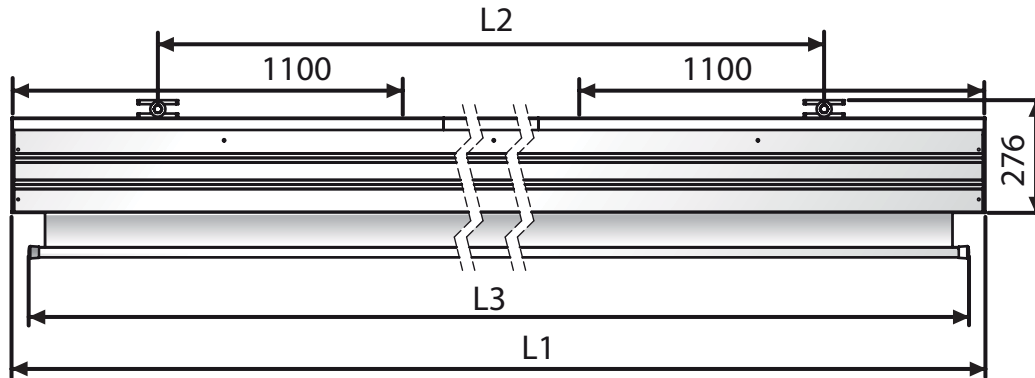
Aspect Ratios:

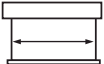


Available dimensions

Minimum width: 400 cm
Maximum width: 500 cm





		Viewing Area	Dimensions			Border	Net weight
		cm	L1 mm	L2 mm	L3 mm	cm	kg
16:10	255 x 400	245 x 390	4175	3056	4067	5	106
	285 x 450	275 x 440	4675	3556	4567	5	115
	316 x 500	306 x 490	5175	4056	5067	5	125
16:9	229 x 400	219 x 390	4175	3056	4067	5	105
	258 x 450	248 x 440	4675	3556	4567	5	114
	286 x 500	276 x 490	5175	4056	5067	5	124
4:3	300 x 400	290 x 390	4175	3056	4067	5	108
	340 x 450	330 x 440	4675	3556	4567	5	117
	378 x 500	368 x 490	5175	4056	5067	5	131
1:1	400 x 400	390 x 390	4175	3056	4067	5 L/R	114
	450 x 450	440 x 440	4675	3556	4567	5 L/R	125
	500 x 500	490 x 490	5175	4056	5067	5 L/R	137

Available standard resolution projection surfaces

All screen surfaces are seamless in the viewing area.

Matte White

Gain:	1.0
Viewing Angle:	120°
Base material:	Fiberglass
Fire retardancy:	B2
Black backing:	Yes
Opacity rating:	> 99 %
Seamless:	Yes
GreenGuard certification:	No

B1 / M1 Fire retardancy

Projection surface with B1 / M1 fire retardancy is optionally available. Contact Projecta for feasibility.

ELPRO LARGE ELECTROL

DA-LITE.
A brand of  Legrand

Certifications

- Products are manufactured in an ISO14001 certified facility
- Projecta is an ISO 9001 certified company
- REACH - Registration, Evaluation, Authorisation and Restriction of Chemical substances.
- RoHS - Restriction of Hazardous Substances.
- WEEE - Waste Electronic and Electrical Equipment Regulations.



Customisation

Give exact the sizes of the projection screen you need:

Viewing size: _____ Height (cm.) x _____ width (cm.)

Surface: _____ Border top: _____ (cm.) Border bottom: _____ (cm.)

RAL color case and plastic parts: RAL _____

Motor positioned on right side

Screen fabric mounted reversely

Remarks: _____

Accessories - control options

For projection screens with a standard motor / delivered as standard with a wall switch

- All-in-One Control Box, which contains:
 - > Relay (dry contact)
 - > RF control, including remote control
 - > IR control, including remote control
 - > Manual switch
 - > 12v DC trigger
- Power Sensing Trigger (need All-in-One Box to function)
- Easy Install plug & play relaybox with potential free contacts
 - > Easy Install plug & play RS232/RS422 control kit
 - > Easy Install plug & play RS232/RS422 with IP control kit
- Keyswitch

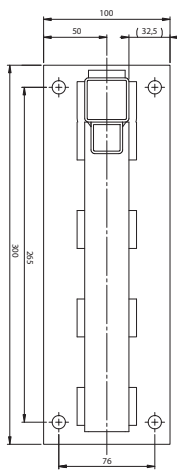
Accessories - installation

- Ceiling brackets
- Set extension brackets
- Set wall clamps

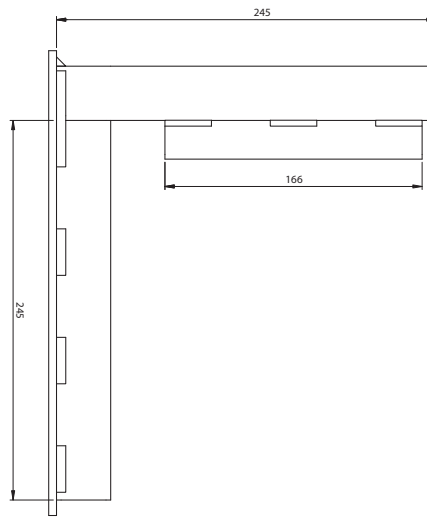
ELPRO LARGE ELECTROL

Elpro Large - wall mounting bracket included

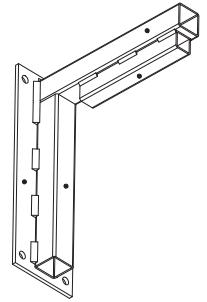
(Dimensions in mm)



front view

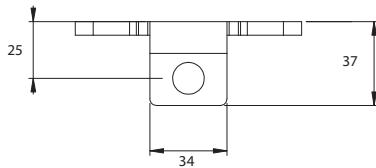


side view

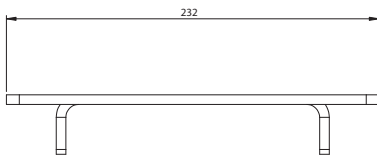


Elpro Large - ceiling mounting bracket included

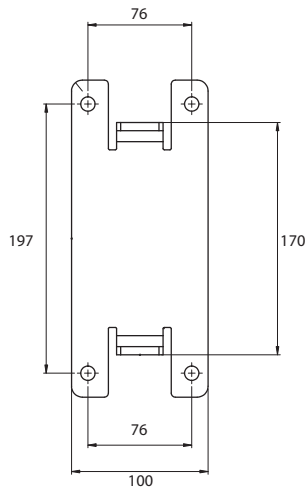
(Dimensions in mm)



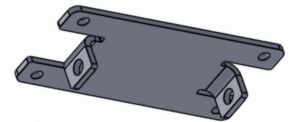
front view



Side view



Bottom view



Warranty

Da-Lite provides a limited 5 year warranty on the Elpro Concept range and a limited 2 year warranty on all other products. The warranty on the motor of electrical screens is 5 year. All warranties are in effect beginning the date the product was invoiced by Projecta.