

CM-AVIP-IN-1USB-1ETH Streaming media and 4K playback input module

Quick Start Guide V1.00

Firmware version M402 and above

QSG-CM-AVIP-IN V1.00

Jan 2017

In this guide

About your Streaming media and 4K playback input module	2
Quick start guide	3
Checking and updating the CORIOmaster firmware	9
Checking your firmware version and downloading new firmware	10
Updating the firmware	10
Liability statement	12
Limited warranty	13
Regulatory compliance	14
Contact us	15

Thanks for buying this Streaming media and 4K playback input module. The Streaming media and 4K playback input module allows you to decode and play media, images, and video streams from a range of sources over IP. Sources include streaming server, and from any device when used with an IP encoder, such as the Magenta™ ENCODER-100. You can also play media directly from a USB drive.

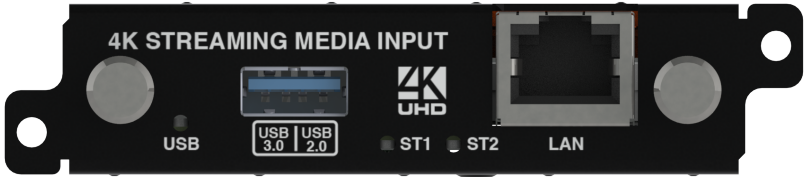
Features

- Play two simultaneous channels of media, including IP streams
- Primary channel supports up to 4K @30 Hz
- Secondary channel supports 1080p @60 Hz
- IP streams up to 1080p @60 Hz
- Play video clips from USB drive up to 4K @30 Hz
- Play still images up to 8K
- Supports USB 2.0 and USB 3.0
- Play media from streaming server

This Quick Start Guide assumes that your Streaming media and 4K playback input module is installed in a CORIOmaster™, CORIOmaster mini™, or CORIOmatrix™.

If you need help installing your Streaming media and 4K playback input module, contact your supplier, consult an experienced AV installer, or contact tvONE support. Contact details are at the back of this guide.

About your Streaming media and 4K playback input module



USB (LED)	Indicates the status of the USB drive.
USB 3.0 USB 2.0	Connect a USB drive to play media directly. For best results, we recommend using USB 3.0.
ST1 (LED)	Indicates the status of the card. Green means that the card is working correctly. Red means that the card is booting, or that there is a problem.
ST2 (LED)	Indicates the status of the module. Green means that the module is working correctly. Red means that the module is booting, or that there is a problem.
LAN	Connect an Ethernet cable to play media over IP.

If any status indicator stays red, restart your CORIOmaster. If that doesn't work, contact tvONE support. Contact details are at the back of this guide.

Quick start guide

✔ It's easy to get started with the Streaming media and 4K playback input module, but if you want more help with any of these steps, or with setting up and using streaming media, select ? in CORIOgrapher and search, or ask a question.

Setting up the Streaming media and 4K playback input module

1. Connect your cables and power on your CORIOmaster or CORIOmaster mini.

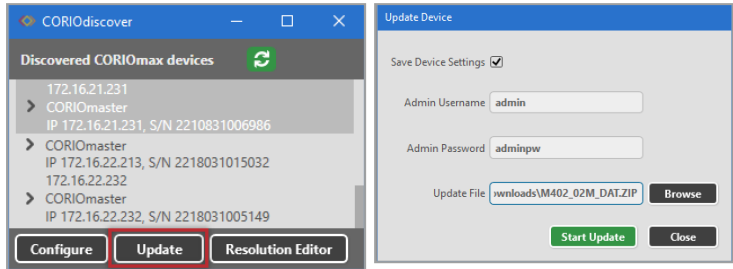


To stream media, connect an Ethernet cable to the Streaming media and 4K playback input module, or connect a USB drive to play media directly.



Make sure your CORIOmaster is connected to your display devices and to an AC power outlet.

2. Download the latest firmware for your CORIOmaster or CORIOmaster mini from tvone.com/firmware-updates.
3. Use CORIOdiscover to update your firmware.




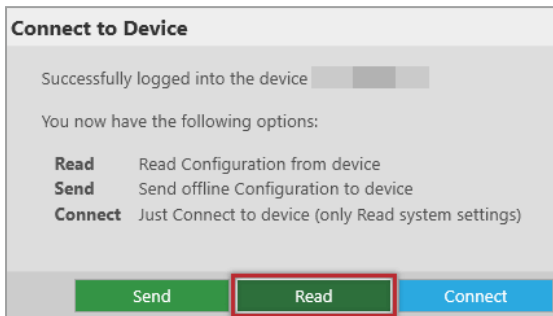
Read more about updating firmware on page 9.

4. Request the latest version of the CORIOgrapher software from the Downloads tab at tvone.com/new-coriographer-videowall-design-software.
5. Install the latest software.

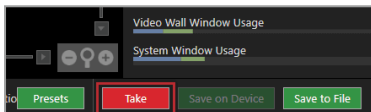
The latest version of CORIOgrapher includes help files. If you need help with any of the following steps, select **?** in CORIOgrapher and search, or ask a question.

Connecting to CORIOgrapher™ and choosing network settings

1. Open CORIOgrapher , connect to your CORIOmaster, and read the configuration from your device.



Make sure you have a video wall set up that includes at least one window that uses a source from the Streaming media and 4K playback input module, and select **Take**.

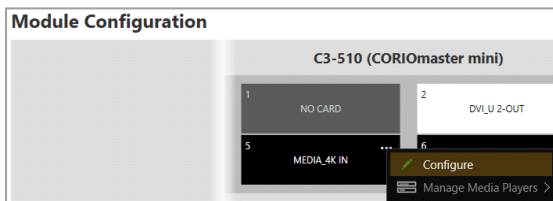


2. **OPTIONAL:** If you only want to play media from a USB drive, you don't need to do this step.

If you want to stream media over IP, choose network settings for your Streaming media and 4K playback input module.

Select  > Module Configuration.

Find the Streaming media and 4K playback module that you want to set up, and select **...** > **Configure**.



Module Settings [Slot5]

Module health

Networking

Configuration:

IP Address: . . .

Subnet Mask: . . .

Default Gateway: . . .

DNS (Preferred): . . .

DNS (Alternative): . . .

MAC Address:

Link Speed:

If you choose DHCP, an IP address is assigned to you.

If you choose a static IP address:

- Enter a value for your IP address and subnet mask.
- If you want to stream from the internet, enter a value for your gateway.
- If you want to refer to a source by name, enter a value for DNS.



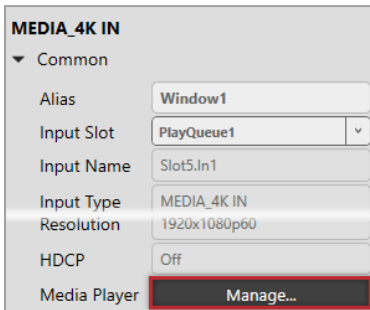
Static IP address

If you choose a static IP address, make sure you enter a unique value for your IP address. Using the same IP address for multiple devices can cause your devices to disconnect.

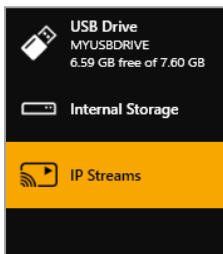
If you need help with network settings, contact your network administrator.

Playing media and streams

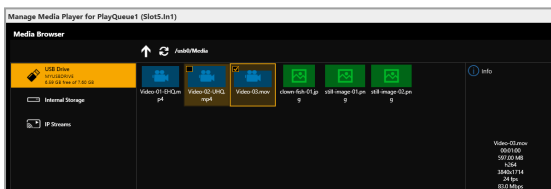
1. Double-click the window you wish to play streaming media, and select (Media Player) Manage.



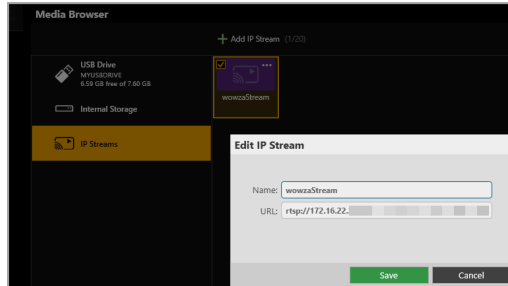
2. Select your media source.



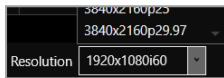
Your media items appear as icons. Still images are green, videos are blue, and saved media streams are purple. Information about the media item appears on the right.



3. Optional: if you want to stream media, add your streams.
 - If you want to stream from the internet, or from an encoder, add the stream. Select IP Streams > Add IP Stream and enter a useful name and the URL of the media stream.



4. Choose a resolution for your media stream.



Tips and recommendations for choosing the best resolution are available in CORIOgrapher Help.

5. Drag items into the play queue and use the playback controls to play your media. Check that the media is playing on your video wall.
6. Use the playback controls start, stop, pause, skip to the next item, and return to the previous item. You can select and delete media items, or clear the entire play queue.



Stop playback to loop the play queue.



Checking and updating the CORIOmaster firmware

You must be connected to your CORIOmaster to check and update firmware.

You check the firmware of your CORIOmaster on the **Settings** window of the CORIOgrapher software. You update the firmware of your CORIOmaster on the **Update Device** window of the CORIODiscover™ software.



When you update the firmware, any unsaved configuration in CORIOgrapher is deleted. Make sure you save any configurations that you want to keep before you start the updating process.

Who can do this?


Administrators can do this task.

Before you start

To install the latest CORIOmaster firmware, you need CORIODiscover V1.2 or above. V1.2 of CORIODiscover is available from the CORIOmaster C3-540 page at tvone.com/firmware-updates.

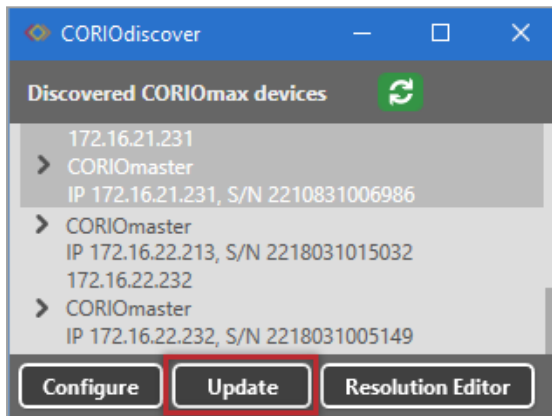
Checking your firmware version and downloading new firmware

CORIOdiscover warns you if you try to install firmware that is older or the same as your existing firmware. If you don't want to check your existing firmware version, skip to step **2**.

1. In CORIOgrapher, select  > System and look for your current firmware version.
2. Check for newer firmware at tvone.com/firmware-updates.
Select your device from the list and compare the firmware version to your own.
 - If you have a CORIOmaster, select CORIOmaster C3-540.
 - If you have a CORIOmaster mini, select CORIOmaster mini C3-510.
3. If your firmware is out of date, download the zipped DAT file.
You don't need to extract the DAT file.

Updating the firmware

1. In CORIOdiscover, select .

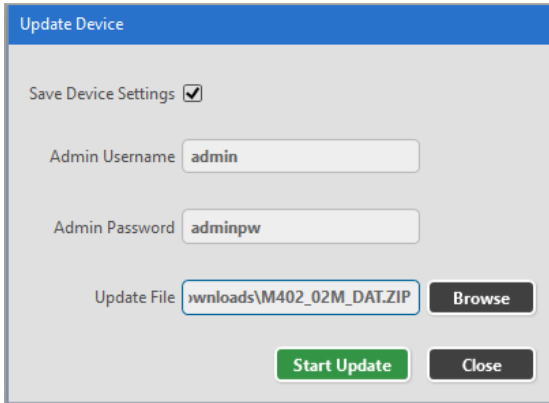


2. Select your CORIOmaster from the list and select Update.

3. To save your CORIOmaster settings, select Save Device Settings.

When you save your settings, your CORIOmaster keeps all your saved configurations and video walls.

4. Enter your administrator login details.



The screenshot shows a dialog box titled "Update Device". At the top, there is a blue header bar. Below it, the text "Save Device Settings" is followed by a checked checkbox. There are two text input fields: "Admin Username" containing "admin" and "Admin Password" containing "adminpw". Below these is an "Update File" field containing "downloads\M402_02M_DAT.ZIP" and a "Browse" button. At the bottom, there are two buttons: a green "Start Update" button and a black "Close" button.

5. Browse to the zipped DAT file that you downloaded.
6. Select Start Update.

When the update is finished, you can log in to your CORIOmaster again.

Liability statement

This product is intended for professional use. This product is not intended for use in a medical environment and does not have the required certifications for such use. Similarly, use aboard any aircraft or spacecraft while in flight, or as an adjunct to any surface, airborne, or marine navigation system, or any offshore marine activity, including control of any watercraft, or any use similar to those specifically herein mentioned, is prohibited. Use in the aforementioned circumstances would require additional testing and certification.

You have not become the owner of any software - you have merely purchased the right to use the software. You may make one copy of the software for your own use. Other copies will be deemed a breach of copyright.

No warranty is made, either expressed or implied, including, but not limited to, any implied warranties of merchantability or fitness for a particular purpose. In no event shall the supplier or manufacturer of this product be liable for errors found within, or be liable for any direct, indirect or consequential damages or loss in connection with the purchase or use of this hardware, software, or manual. The sole and exclusive liability to the supplier and manufacturer regardless of the form of action shall not exceed the replacement cost of the materials described herein.

tvONE reserves the right to revise any of its hardware and software products, following its policy to modify and/or improve its products where necessary or desirable. This statement does not affect the legal rights of the user in any way.

By using this equipment, you have indicated that you have agreed to the terms listed above. If you do not wish to agree, or the above terms are contrary to your conditions of purchase, you may return the equipment, unused, to your supplier.

All third party trademarks and copyrights are recognized. The tvONE logo, Magenta logo, CORIO word and the CORIO logo are registered trademarks of tvONE. All other trademarks are the property of their respective holders.

E&OE

Limited warranty

tvONE warrants the original purchaser that the equipment it manufactures or sells will be free from defects in materials and workmanship for a fixed term from the date of purchase. The warranty term for specific product lines is defined below.

1. tvONE branded products based on tvONE's CORIO technology are warranted for a period of five years from the date of purchase. This includes products with the model number prefix of C2, 1T-C2, C3, CX, A2, or S2.
2. tvONE products, other than those based on tvONE's CORIO technology mentioned above, are warranted for a period of three years from the date of purchase. This includes products with the model number prefix of 1T, with the exception of 1T-C2.
3. Magenta branded products are warranted for a period of three years from the date of purchase.
4. LCD Monitors are warranted for a period of three years from the date of purchase, with the exception of the LCD panels integrated into the monitors that are supplied by third parties. LCD panels are limited to the term and conditions of the warranty offered by the respective LCD panel manufacturer. Such specific LCD panel warranties are available upon request to tvONE.

Should a product, in tvONE's opinion, prove defective within this warranty period, tvONE, at its discretion, will repair or replace this product without charge. Any defective parts replaced become the property of tvONE. This warranty does not apply to those products which have been damaged due to accident, unauthorized alterations, improper repair, modifications, inadequate maintenance and care, or use in any manner for which the product was not originally intended.

If repairs are necessary under this warranty policy, the original purchaser must obtain a Return Authorization Number from tvONE and return the product to a location designated by tvONE, freight prepaid. After repairs are complete, the product will be returned, freight prepaid.

LIMITATIONS - All products sold are "as is". The above Limited Warranty is in lieu of all other warranties for this product, expressed or

implied, and is strictly limited to the stated number of years from the date of purchase. tvONE assumes no liability to distributors, resellers or end-users or any third parties for any loss of use, revenue, or profit.

tvONE makes no other representation of warranty as to fitness for the purpose or merchantability or otherwise in respect of any of the products sold. The liability of tvONE with respect to any defective products will be limited to the repair or replacement of such products. In no event shall tvONE be responsible or liable for any damage arising from the use of such defective products whether such damages be direct, indirect, consequential or otherwise, and whether such damages are incurred by the reseller, end-user or any third party.

Regulatory compliance

This product has been tested for compliance with appropriate FCC and CE rules and regulations. The power adapter and supply has been tested for compliance with appropriate UL, CUL, CE, PSE, GS, rules, regulations and/or guidelines. This product and its power adapter is RoHS compliant.

Contact us


www.tvone.com

info@tvone.com

tvONE NCSA

North, Central, and South America

 2791 Circleport Drive, Erlanger, KY 41018, USA

 Tel +1 859-282-7303


Fax +1 859-282-8225


 Sales: sales@tvone.com

Support: tech.usa@tvone.com

tvONE EMEA

Europe, Middle East, Africa, and Asia Pacific

 Continental Approach, Westwood Industrial Estate, Margate,
Kent, CT9 4JG, UK

 Tel +44 01843 873311

Fax +44 01843 873312

 Sales: sales.europe@tvone.com

Support: tech.europe@tvone.com

Information in this document is subject to change without notice. No part of this publication may be reproduced, stored in a retrieval system, or transmitted in any form or any means electronic or mechanical, including photocopying and recording for any purpose other than the purchaser's personal use without the written permission of tvONE.

Copyright © 2017 tvONE. All rights reserved.



See our full range of scalers and video processors at www.tvone.com

