



Encoder-100 Streaming Media Encoder

Quick Start Guide V1.00

Firmware version 1.05.03.007 and above

QSG-ENCODER-100-V1.00

May 2017

In this guide

About your Encoder-100	2
Quick start	3
Regulatory compliance	9
Contact us	9

Thanks for buying this Encoder-100 from tvONE.

The Encoder-100 streaming media encoder allows you to stream high quality video and audio from a range of sources to the Streaming media and 4K playback input module of your CORIOmaster™, CORIOmaster mini™, or CORIOmaster micro™.

Features

- Convert video and audio to high quality digital stream.
- High quality, low bandwidth encoding with H.264 compression.
- Full 1080p HD support at up to 60 frames per second.
- Supports unicast and multicast streaming.
- HDMI video and audio input and output.
- Analog audio input and output.
- Preview your video signal and stream separately.

Recommendations

- For best results, use Gb Ethernet cables and equipment.
- In industrial environments, use shielded Ethernet cables.
Shielded Ethernet cables are often marked F/UTP or FTP.

About your Encoder-100

Encoder-100 rear panel



DC 5V	Connect to an electrical outlet
LAN	Sends encoded signal to your network Connect to your network with Ethernet
PREVIEW	Allows you to preview your encoded signal Connect to a display with a VGA cable
HDMI OUT	Allows you to preview your encoded signal Connect to a display with an HDMI cable
HDMI IN	Receives video and digital audio signal from a source Connect to a source with an HDMI cable
AUDIO OUT	Allows you to preview your audio signal Connect a speaker with a 3.5 mm jack audio cable
AUDIO IN	Receives analog audio from a source Connect a 3.5 mm jack audio cable Note: audio is supported by CORIOmaster micro™ only

Quick start



It's easy to get started with the Encoder-100, but if you want more help with any of these steps, select **?** in CORIOgrapher™ and search, or ask a question.



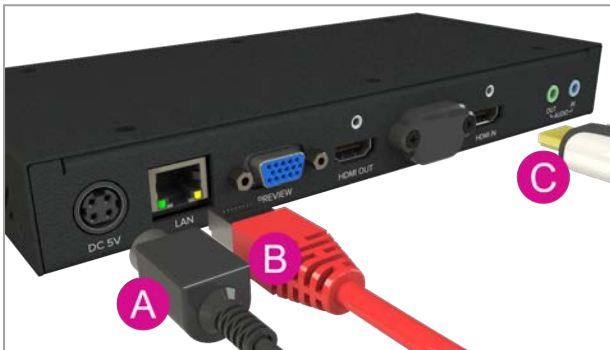
The Encoder-100 cannot encode HDCP encoded sources.

Before you start

To use an Encoder-100, you must have a Streaming media and 4K playback input module installed in your CORIOmaster™, CORIOmaster mini™, or CORIOmaster micro™.

Setting up the Encoder-100

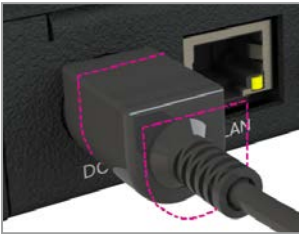
Connect your cables.



- A. Connect the power supply to an electrical outlet.
- B. Connect an Ethernet cable to your network.
- C. Connect an HDMI cable to the video source that you wish to stream.


For example, you could connect a camera, an endoscope, or a media player.

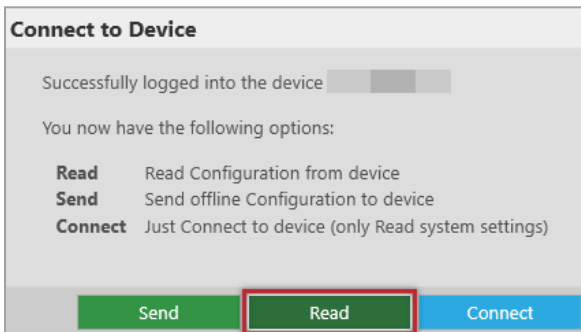
- **OPTIONAL:** if you want to stream analog audio, or preview your audio, connect a 3.5 mm jack audio cable.
- **OPTIONAL:** if you want to see a preview of your stream, connect a VGA cable to PREVIEW, or an HDMI cable to HDMI OUT, and to a display.



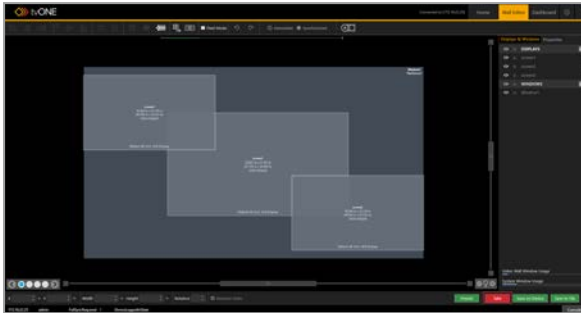
The power connector is a latching power connector. To remove the power connector from your Encoder-100, slide the sleeve backward.

Configuring the Encoder-100 with CORIOgrapher™

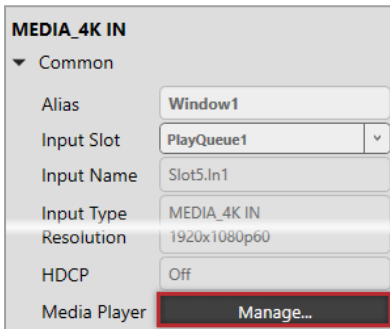
1. Open CORIOgrapher™ , connect to your CORIOmaster™, and read the configuration from your device.



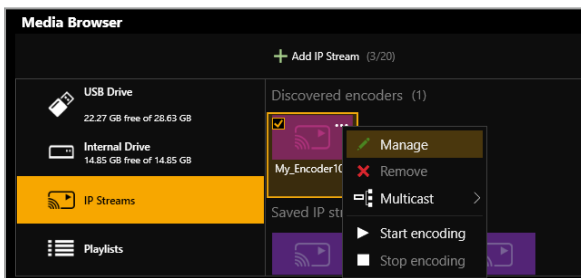
2. Set up a video wall that includes at least one window playing the Streaming media and 4K playback input module, and select **Take**.



3. Double-click the window you wish to play streaming media, and select **(Media Player) Manage**.



4. Select **IP Streams**, select your **Encoder-100**, and select **Manage**.



When you first connect, your Encoder-100 is named with its ID number. Find the ID number is on the bottom of your Encoder-100.

If your Encoder-100 isn't displayed, select Find and enter the URL of your Encoder-100.

5. Select System, and name your Encoder-100.

Names can be up to 62 characters long, and can't be blank.

The screenshot shows the 'Manage encoder [My_Encoder100] - Encoding' window with the 'System' tab selected. The 'Name' field contains 'My_Encoder100'. The 'Serial number' is '8T07159' and the 'Version' is '1.05.03.007'. A 'Reboot' button is visible below the version field. At the bottom of the window are 'Apply' and 'Close' buttons.

6. Select Network, and choose network settings for your Encoder-100.

The screenshot shows the 'Manage encoder [My_Encoder100] - Encoding' window with the 'Network' tab selected. The 'Configuration' dropdown is set to 'DHCP'. The 'IP Address' is '192.168.1.1', the 'Subnet Mask' is '255.255.255.0', and the 'Default Gateway' is '192.168.1.254'. The 'MAC Address' is '74DAEA15DDCE'. At the bottom of the window are 'Apply' and 'Close' buttons.

- If you choose DHCP, an IP address is assigned to you.
- If you choose a static IP address, enter a value for your IP address, subnet mask, and gateway.

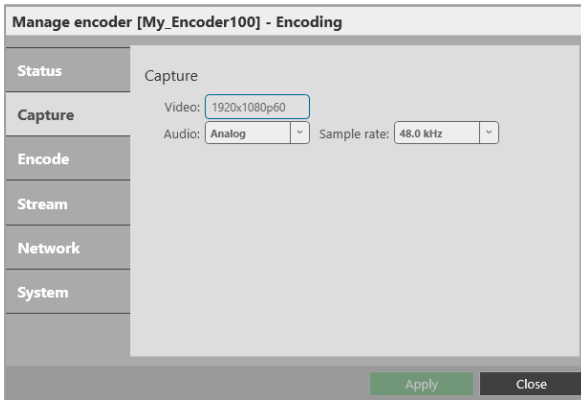
If you need help with network settings, contact your network administrator.

Static IP address



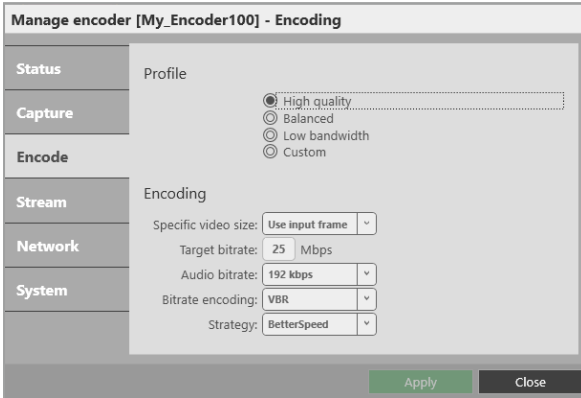
If you choose a static IP address, make sure you enter a unique value for your IP address. Using the same IP address for multiple devices can cause your devices to disconnect. Contact your network administrator for help.

7. Select **Capture**, and check that your audio source is correct.

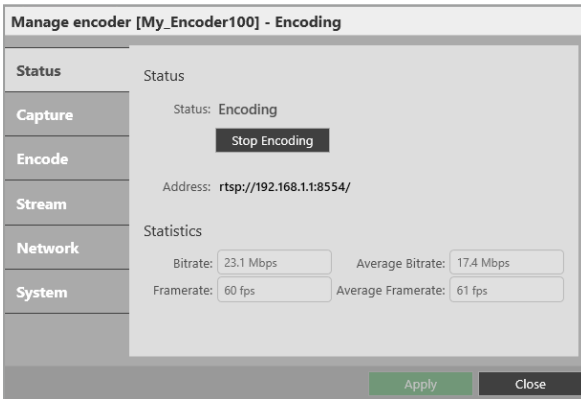


8. Select Encode, and choose a profile.

The profile you choose depends on the bandwidth of your connection and your quality requirements. The default settings produce a high quality stream.



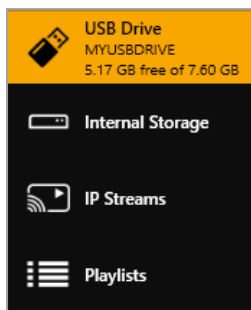
9. Select Status > Start encoding.



Read more about configuring encoders in CORIOgrapher™ Help.

Playing streaming media

Select IP Streams and drag the stream from your Encoder-100 into the play queue. Use the playback controls to play your media.



Read more about playing streaming media in CORIOgrapher™ Help.

Regulatory compliance

This product has been tested for compliance with appropriate FCC and CE rules and regulations. The power adapter and supply has been tested for compliance with appropriate UL, CUL, CE, PSE, GS, rules, regulations and/or guidelines. This product and its power adapter is RoHS compliant.

Contact us

🌐 www.tvone.com

✉ info@tvone.com

✉ **Support NCSA:** tech.usa@tvone.com

✉ **Support EMEA:** tech.europe@tvone.com

Information in this document is subject to change without notice. No part of this publication may be reproduced, stored in a retrieval system, or transmitted in any form or any means electronic or mechanical, including photocopying and recording for any purpose other than the purchaser's personal use without the written permission of tvONE.

Copyright © 2017 tvONE. All rights reserved.

