

1T-C2-750



Dual Window Switcher Scaler PLUS



- Dual inputs for DVI-I, HDMI or VGA
- HDMI support including audio & EDID management
- Two high quality CORIO scaling engines for up/down/cross conversion
- Single or dual picture-in-picture
- Two still image stores for graphics & logos
- Zoom to 10x, shrink to 10% with pixel accuracy
- Borders with transparency
- Chromakey and Lumakey
- Transitions include dissolve, fade through black, seamless cut or wipes
- 50 user definable presets
- Front panel with OSD or 3rd party control

The 1T-C2-750 Scaler PLUS is the perfect 1080p solution, offering high quality scaling and superior switching in a compact, cost effective format. Dual CORIO scalars can also be used for flexible picture-in-picture, keying and format conversion.

Dual Picture-In-Picture

Dual picture-in-picture is a simple way to boost collaboration with the option to add borders and color background fields. Switch between sources and presets using front panel control.



Seamless Switching



Add eye catching impact by using transitions including dissolve, fade through a color, seamless cut or wipes.



Wipe Transition

User Definable Preset Examples



Dual PIP



Layered PIPs & borders



Color background



Transparency



Store user image
(i.e. keyed logo)

HDMI
COMPATIBLE
with audio support
CORIO2

DVI Adapters

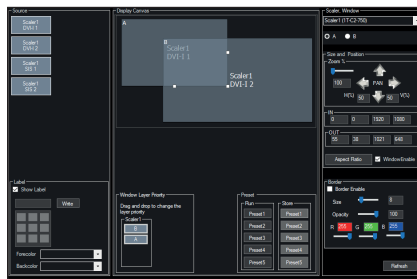
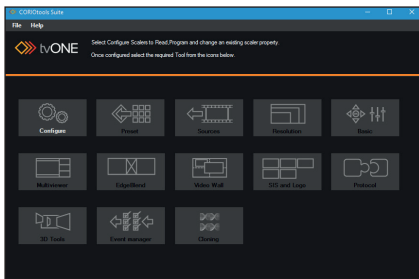


Companion Products



Software

CORIOtools Suite PC software allows you control one or more 1T-C2-750's including adjustment of presets, macros, resolutions, source selection, still image upload and PIP control as well as providing full back up and restore features.



Specifications

Inputs	
Signal Type	2x DVI-I via DVI-I Connector
Digital DVI-D Format:	
Max HD Resolution	1080p@60Hz
Max PC Resolution	1920x1200@60Hz
Analog DVI-A Format:	
Max HDTV Resolution	1080p@60Hz
Max PC Resolution	2048x2048
Max Horiz Scan Rate	150KHz
Signal Format	RGBHV, RGBS, RGsB, YPbPr
Sync	TTL Level, 10KΩ, Pos or Neg
Termination	75Ω
R-G-B Level Range	0.5-2.0 Vp-p
Scan Rate Detection	Automatic
Output	
Signal Type	1x DVI-I via DVI-I Connector
Digital DVI-D Format:	
Max HD Resolution	1080p@60Hz
Max PC Resolution	1920x1200@60Hz
Analog DVI-A Format:	
Max HDTV Resolution	1080p@60Hz
Max PC Resolution	2048x2048
Vertical Refresh Rate	Any to 250Hz
Signal Format	RGBHV, RGBS, RGsB, YPbPr
R-G-B Level	0.7 Vp-p
General	
System Latency	1 to 2 frames delay
Size and Position	Automatic via AutoSet or Manual
Image Size	User-Definable Presets
Image Freeze	One Video Frame
Settings Memory	Non-Volatile
Zoom Range	Variable to 10X Zoom
Shrink Range	Variable to 10%
Image Mirroring	Horizontal and/or Vertical
Horizontal Filtering	Full Digital
Conversion Technology	Proprietary – CORIO®2

Frame Rate Conversion	Frame add/drop
Color Resolution	24-bit (16.8 Million Colors)
Sampling Rate	162MHz
Digital Sampling	24-bit, 4:4:4 format
Firmware Memory	Flash, Upgradeable via RS-232
Analog Video Adjust	R-G-B Levels Contrast, Phase
Control Methods	
Local	via Front Panel Buttons & OSD
RS-232 Interface	via D9 Female Connector
Infrared Remote	via IRC-5 Remote Unit
Warranty	
Limited Warranty	5 Years Parts and Labor
Regulatory Compliance	
Main Units	FCC, CE, RoHS
Power Supplies	UL, CUL, CE, PSE, GS, RoHS
Mechanical	
Size (H-W-D)	30x200x90mm (1.18"x7.87"x3.54")
Weight (Net)	0.52 kg (1.14 lbs)
Environmental	
Operating Temperature	0° to +40° C (+32° to +104° F)
Operating Humidity	10% to 85%, Non-condensing
Storage Temperature	-10° to +70° C (+14° to +158° F)
Storage Humidity	10% to 85%, Non-condensing
Power Requirement	
External Power Supply	12VDC@1A
Accessories Included	
1x Operations Manual	1T-C2-750
1x Power Adapter	Universal PSU
Product Item Numbers	
1T-C2-750	Dual-PIP DVI-I Scaler
Optional Accessories	
CMD1941	DVI Male to HDMI Female
RM-230	Single/Dual Rackmount Kit
ZDH-2038	DVI Male to 5-BNC Female
ZDH-2040	DVI Male to VGA Female